

- Generator Radiator
- Industrial Radiator
- Mine Equipment Radiator
- Marine Equipment Radiator
- Industrial Heat Exchanger

# Technical Solution For Engine Cooling System

# COMPANY PROFILE



## PROFESSIONAL

Weifang Sinrui Radiator Co., Ltd. is a professional manufacturer of cooling equipment design and production. We have been studying and exchanging experience in Britain, Germany and the United States, and have accumulated rich experience in design and manufacturing. Through the continuous optimization of the design and manufacturing capacity, Sinrui has now become a first-class factory of generator radiator.

Sinrui's new products are now being used by customers from more than 20 countries around the world. The sales and after-sale team has been set up in Singapore and Australia to provide more convenient and rapid services.

## CAPABILITY

Sinrui's radiators are governed by the ISO9001:2008 quality management system. Sinrui's radiators are designed expressly with the customer's requirements in mind. they can be designed to meet unique operation conditions, environmental challenges, installation requirements and product life cycle expectancy.

Sinrui are committed to the prompt delivery of the product.

Sinrui use Qingdao and Shanghai and Shenzhen Port. Which are the most convenient and have the most network routes around the world, to fulfill delivery commitments .

We have one of the most competitive and assuring pricing systems.

Our sales staff and after-market staff are committed to a 24/7 contactable routine.



↑ VACUUM BRAZING FUMACE



↑ TURRET PUNCHING MACHINE



↑ NC BENDING & SHEARING MACHINE



↑ FINNING MACHINE



↑ HIGH SPEED PUNCH



↑ POWDER COAT LINE

# GENERATOR RADIATOR



They are designed expressly with the customer's requirements in mind. Can be designed to meet unique operation conditions, environmental challenges, installation requirements and product life cycle expectancy.



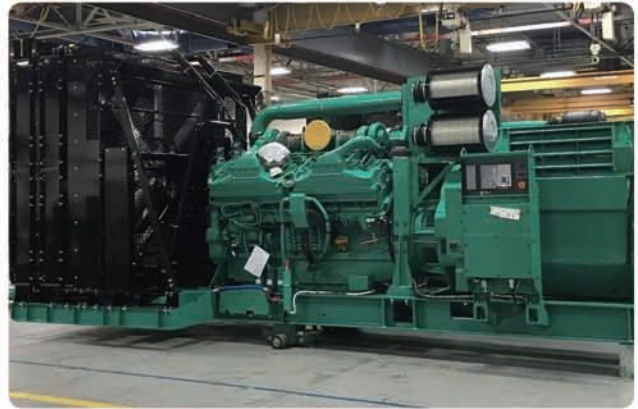
↑ Mitsubishi Engine Radiator



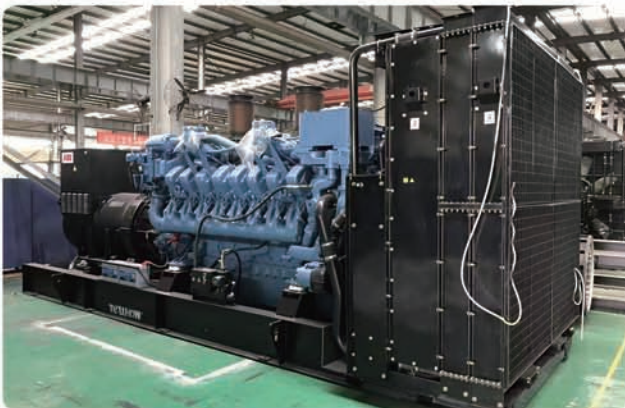
↑ Caterpillar Engine Radiator



↑ Waukesha Engine Radiator



↑ Cummins Engine Radiator



↑ MTU Engine Radiator



↑ Perkins Engine Radiator

# REMOVABLE RADIATOR



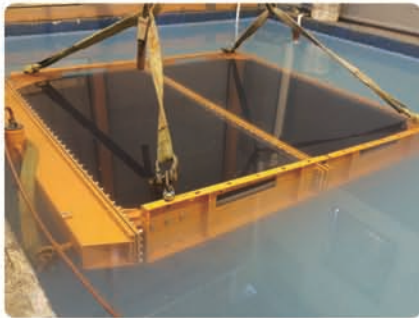
Rubber grommet absorbs all the vibration and thermal expansion  
Easily remove and replace tubes for cleaning or in case of accidental damage  
Field-repairable with simple hand tools  
Long-lasting durability  
Up to 3-Year/18,000 hour Warranty available



↑ Engine Removable Radiator



↑ Remote Removable Radiator



↑ Air Tightness Test



↑ Oil Cooler



↑ Finned Tubes



↑ New Type of Mining Tube Core Radiator



↑ Fracturing Truck Radiator



↑ Bracket Matched

# INDUSTRIAL HEAT EXCHANGER



Mostly used in situations where the diesel engines are located in the basement, And ventilation and space is limited in the engine room. Heat exchanger is the direct cooling equipment of diesel engine hot medium, Remote radiator is the secondary cooling equipment. This kind model's maintenance cost is low and less influence by the external environment's.



Shell & Tube Heat Exchanger



Shell & Tube Heat Exchanger



Charge Air Coolers



Engine Cooling System



Plate Heat Exchanger



Aluminium Cooler



- 4 BT 3.9 G2
- 6 BT 5,9
- 6 BT 5,9-D
- 6 BT 5,9-G2
- 6 BTA
- 6 BTA 5,9-C
- 6 BTA 5.9
- 6 C8
- 6 CTA
- 6 CTA 8,3 / 6 CTA 8,3-G2
- B 3,3
- LTA 10 / LTA 10 G2
- NT 855 G6
- NTA 855
- NTA 855 G4 / NTA 855 G5
- KTA 19
- KTA 38
- KTA 38 D
- KTA 38 G1
- KTA 38 G2A
- KTA 38 G3 / KTA 38 G5
- KTA 50 G1 / KTA 50 G3
- KTA 50 G8 / KTA 50 G9
- QSB 4,5
- QSB 6,7
- QSK 23 G3
- QSK 23 G3 / QSK 23 G7
- QSK 45 G4 / QSK 45 G6
- QSK 50 G4 / QSK 50 G7
- QSK 60 G3 / QSK 60 G4
- QSK 60 G6 / QSK 60 G7
- QSK 60 G8 / QSK 60 G11
- QSK 60 G12 / QSK 60 G13
- QSK 78
- QSK 78 G12 / QSK 78 G9
- QSK 78 G6 / QSK 78 G8
- QSK 90
- QSK 95G4
- QSM 11 G2
- QST 30 / QST 30 G3
- QST 30 G4 / QST 30 G5
- QSX 15 / QSX 15 G6
- VTA 28
- VTA 28 G5 / VTA 28 G7



- 8V1600 G10F
- 8V396T C33
- 10V1600 G10F
- 12V183 TB32L
- 12V183 TBL
- 12V2000 G25
- 16V2000 G25
- 16V2000 G45
- 16V2000 G60
- 16V2000 G63
- 16V2000 G65
- 16V2000 P62
- 18V2000 G63
- 18V2000 G65
- 18V2000 G85
- 12V4000 G21
- 12V4000 G21R
- 12V4000 G23
- 12V4000 G23R
- 12V4000 G43
- 12V4000 G61
- 12V4000 G63
- 12V4000 P83
- 16V4000 G21
- 16V4000 G23
- 16V4000 G43
- 16V4000 G61
- 16V4000 G63
- 16V4000 G81
- 16V4000 G83
- 20V4000 G23
- 20V4000 G63
- 20V4000 G63L
- 20V4000 G83
- 20V4000 L62



- TCD 2016 V16
- TCD 2020 V16 G4



- S6R - PTA
- S6R2 - PTA
- S12R - PTA
- S12R - PTA2
- S12A2 - PTA
- S12H - PTA
- S12R - F1PTAW2
- S12R - PTAA2
- S16R - PTA
- S16R - PTA2
- S16R - F1PTAW2
- S16R - PTAA2
- S16R2-PTAW
- S16R2-PTA
- S6R - MPTA
- S6R - MPTAW
- S6R - MPTAW - 4
- S6R - MPTK
- S12R - MPTA
- S12A2 - MPTAW
- S12R - Z3 - MPTAW



- 422-TGM
- 1306C
- 2006
- 2800
- 2806A
- 4006
- 4006-23TAG3A
- 4006-TAG
- 4006-TAG 2
- 4008-TAG 2A
- 4012-46TAG 3A
- 4012-46TWG 2A
- 4012-46TWG 4A
- 4016-61TRG1
- 4016-61TRG2
- 4016-61TRG3



- 3508B TA32
- 3512
- 3512 TA
- 3512 B
- 3512B TA60
- 3516 TA
- 3516B TA54
- 3516B TA90
- C15
- C175-16
- G3520 C
- 793
- 795
- 797
- MT5300D
- D11T
- D11R
- PL87



- 16V250
- J420 B11
- J620



- 4024 TF 270
- 4039 D 4
- 6135 HF 475



- D 2842 LE201
- D 2842 LE211
- D 2842 LE203
- D 2848 LE211